

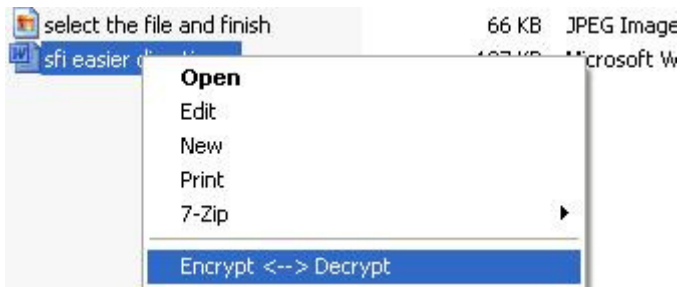
**At the beginning of your work day sign in your USB Secure File Interchange key.**

[Default password is “pass”]. This is single-session login to your physical key.

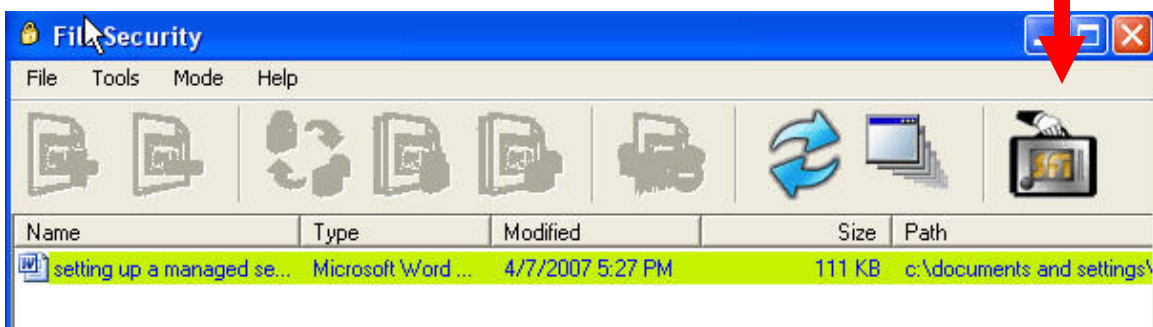


## Send a Secure File

**Right click on the file you wish to transmit securely and choose Encrypt<->Decrypt.**

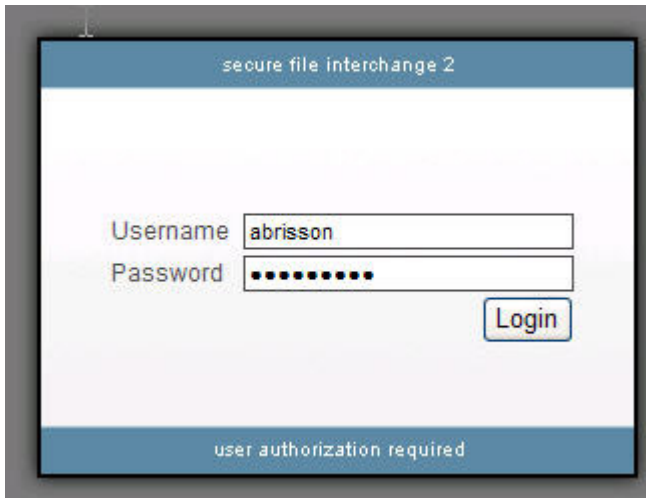


**The file is encrypted. Now, click on the suitcase to go to your secure portal.**

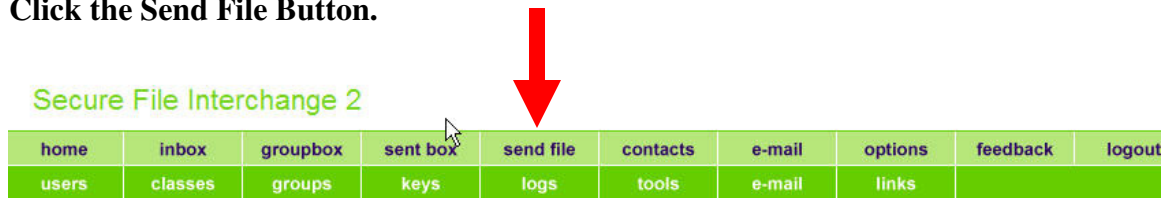


Log on to your secure digital Internet IP portal.

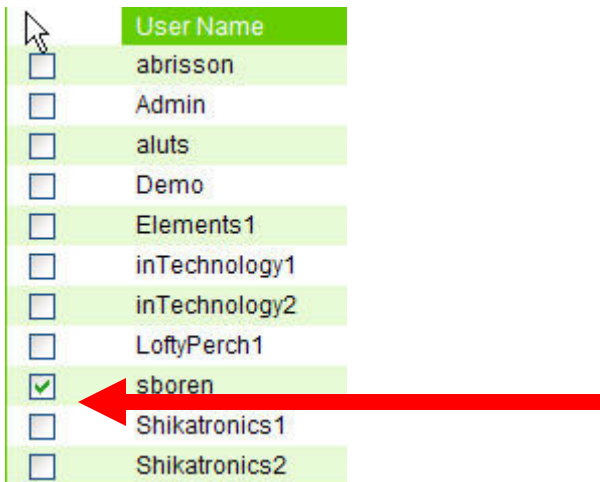
[ie <http://yourcompany.wnlabs.com>]



Click the Send File Button.



Put a checkmark to identify the intended recipient.



**Browse and attach the file and click Finish.**

Secure File Interchange 2


home	inbox	groupbox	sent box	send file	contacts	e-mail	options	feedback	logout
users	classes	groups	keys	logs	tools	e-mail	links		

### Send Secure File - Step 3

Select the files to send

Send By:  SFI  e-Mail

#	Description	File	Save copy
1.	<input type="text" value="Setting Up SFI"/>	<input type="text" value="aged secure file interchange.doc.wnx"/> <input type="button" value="Browse..."/>	<input type="checkbox"/>



**Your important file has now been safely delivered.**